

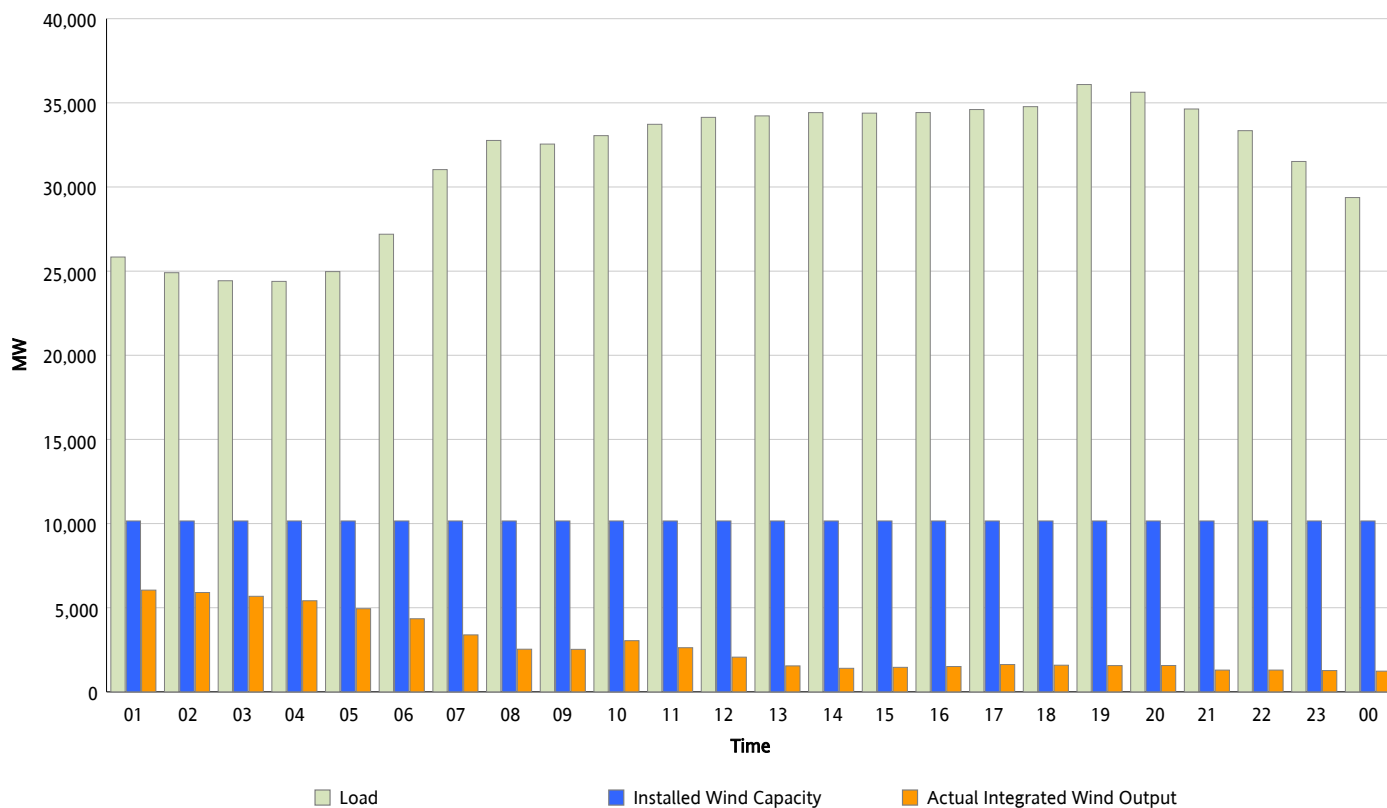


## ERCOT Grid Operations

### Wind Integration Report : 01/25/2013

Peak Load	36,089 MW
Load Peak Hour (HE)	19
Wind Over Peak	1,562 MW
Wind Record 12/25/12	8,638 MW
Max Wind Value*	6,158 MW
Wind Peak Time	00:41
Wind Integration %	24 %

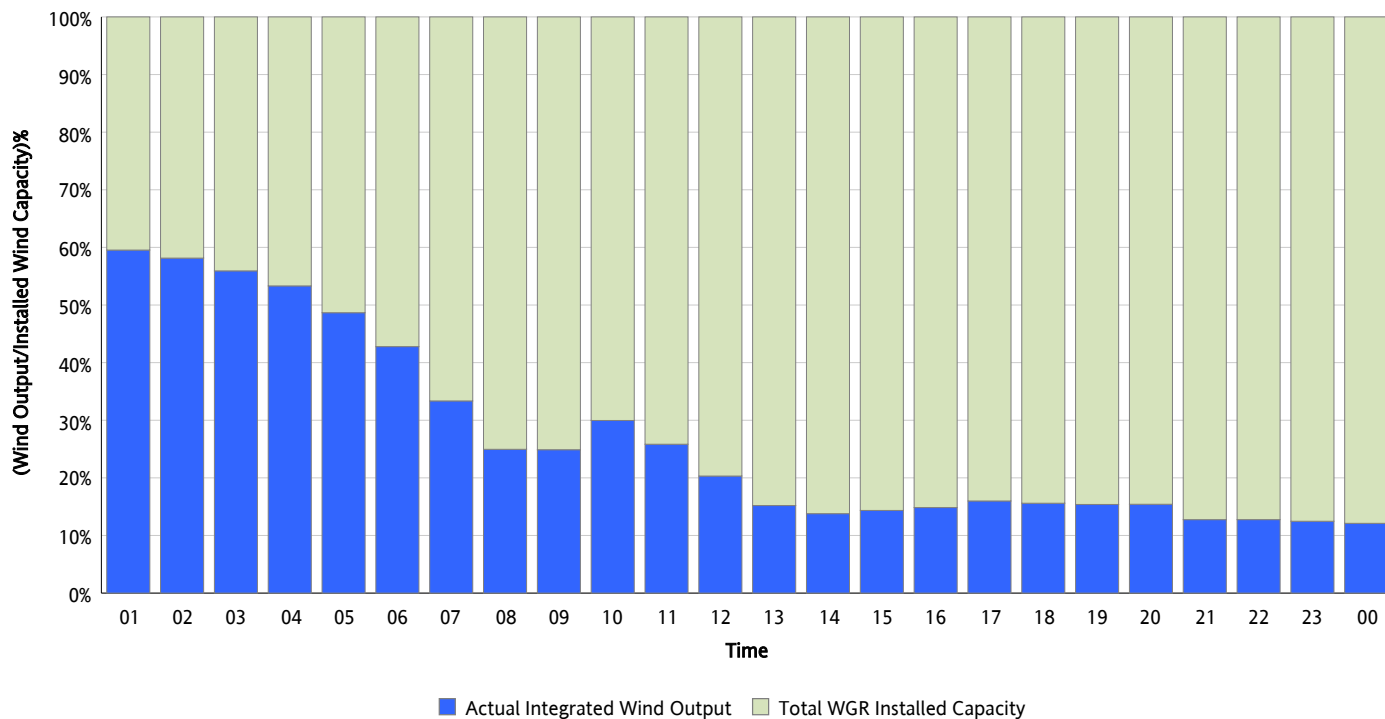
**Hourly Average Actual Load vs. Actual Wind Output**  
01/25/2013



*\* Wind Record and Wind Max represent instantaneous values and the rest of the values are integrated over the hour*

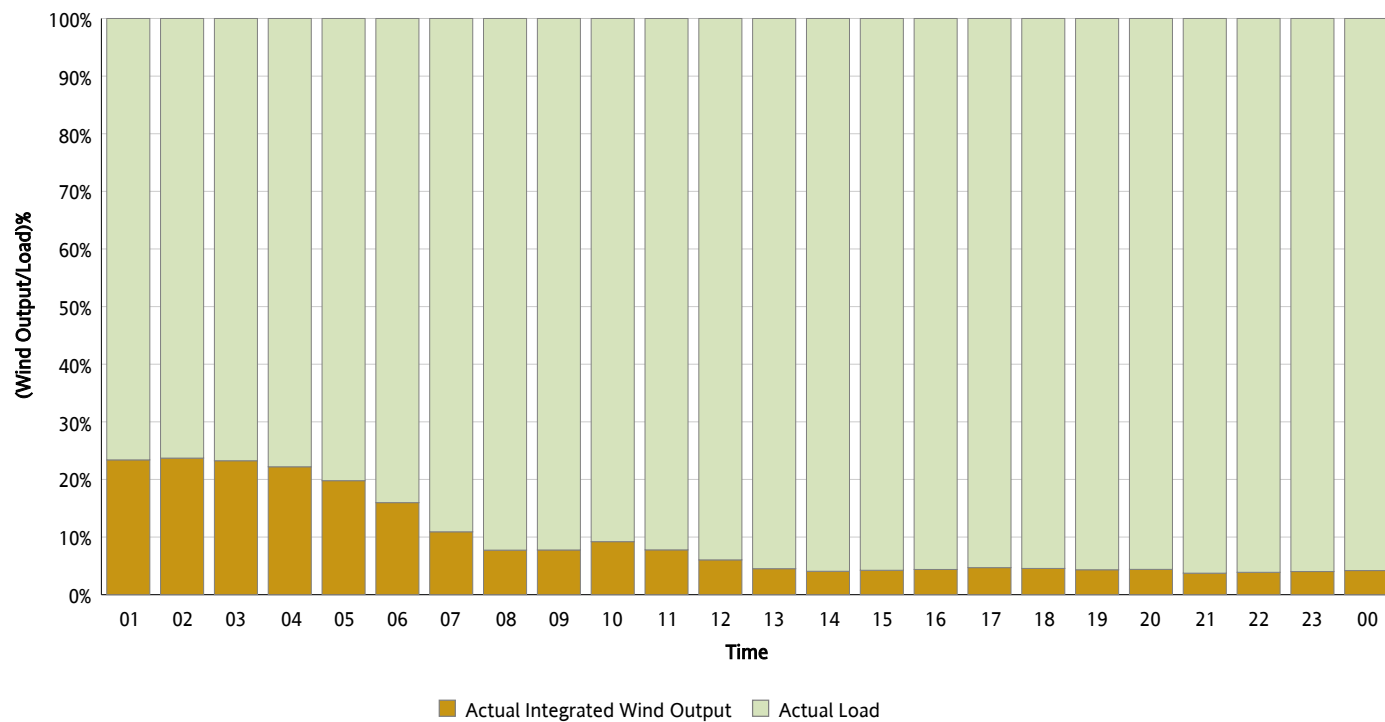
## Actual Wind Output as a Percentage of the Total Installed Wind Capacity

01/25/2013



## Actual Wind Output as a Percentage of the ERCOT Load

01/25/2013



## ERCOT Load vs. Actual Wind Output

01/18/2013 - 01/25/2013

